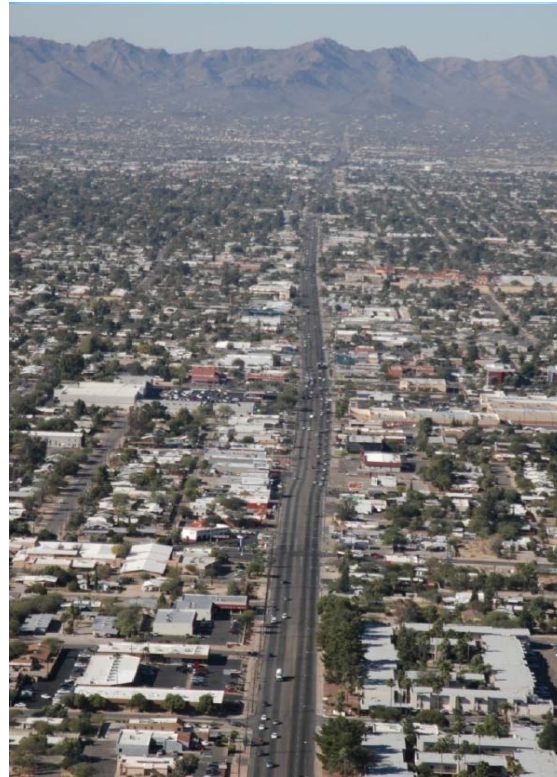




**CITY OF
TUCSON**

PSOMAS



**GRANT ROAD IMPROVEMENTS - SEGMENT II
STONE AVENUE TO PARK AVENUE
HAMPTON STREET DETENTION BASIN**

September 29, 2015



PSOMAS

EXISTING FLOODING CONDITIONS



ALTERNATIVES ASSESSMENT

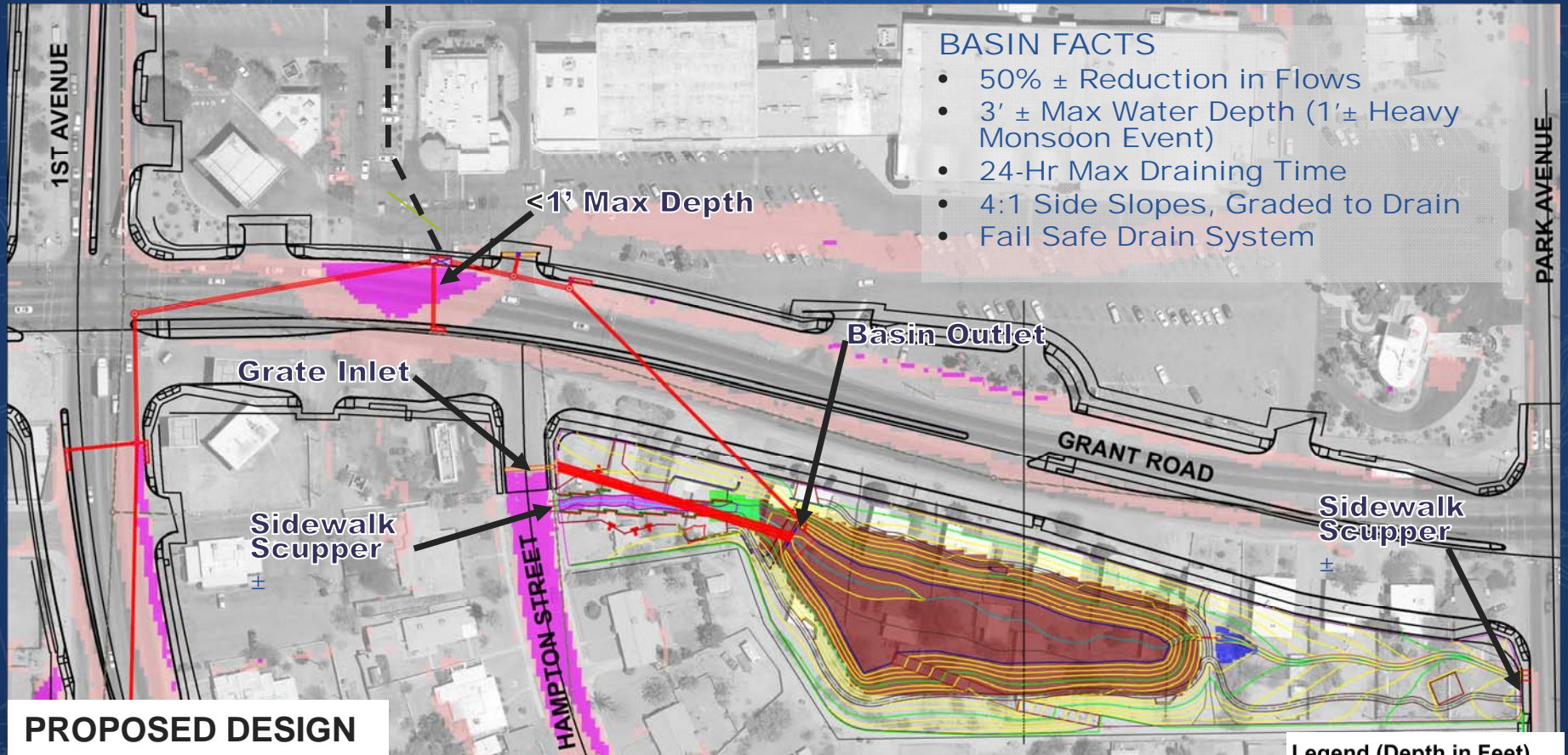
- Upsize Curb Inlet and Outlet Pipe
 - Adverse Downstream Impacts
 - History of Drainage Complaints
- Revise Road Profile
 - Constrained of Adjacent Properties
 - Too Much “Ripple” Effect
- Detention Basin Option
 - Adequate Area Available
 - Able to Collect Majority of Flows
 - Potential Neighborhood Amenity





PSOMAS

DETENTION BASIN DESIGN



BASIN FACTS

- 50% ± Reduction in Flows
- 3' ± Max Water Depth (1'± Heavy Monsoon Event)
- 24-Hr Max Draining Time
- 4:1 Side Slopes, Graded to Drain
- Fail Safe Drain System

Legend (Depth in Feet)

0.25 - 0.50	1.50 - 2.00
0.50 - 1.00	2.00 - 2.50
1.00 - 1.25	2.50 - 3.00
1.25 - 1.50	>3.0



PSOMAS

DRAINAGE BASIN, LANDSCAPE, STREETScape



Plan View



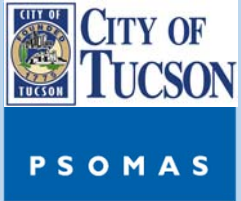
CITY OF
TUCSON

PSOMAS

DRAINAGE BASIN, LANDSCAPE, STREETSCAPE



Plan View



DRAINAGE BASIN, LANDSCAPE, STREETSCAPE



Perspective from Hampton

DRAINAGE BASIN, LANDSCAPE, STREETSCAPE



Shade Structures



Scorpio 22